

AED Institute-Saving Lives too Young to be Lost

DON'T LET CRITICAL DATA GO TO WASTE

After your AED is used, the job isn't over. Many skip this step, but reviewing the device's data is one of the most valuable features of our Pro AED Service Program.



When pads are attached, your AED will automatically:

- 🫀 Record heart rhythm from the moment the second pad is attached.
- 📊 Tracks CPR performance for team insight.
- 💪 Builds staff confidence through debriefs and training.
- 🔄 Provides peace of mind knowing every detail is captured.

Skipping this step means losing critical insights that can improve treatment, enhance team performance, and save lives!

**IF YOUR AED WAS USED IN A CARDIAC ARREST
EVENT, CALL US IMMEDIATELY 808-440-8988**

END OF BASIC AED SERVICE PROGRAM

Taking responsibility for an AED is a significant commitment and requires teamwork and consistent and accurate updates. We want to ensure the safety and reliability that all our program require. For this reason, we will be terminating our FREE Basic AED Service Program as of 12/31/2025.



Other options will be available- Speak with one of our AED Specialist Team Members for more information.

We want to emphasize that we remain fully committed to supporting you and our community. Our team is always available to provide guidance, training, and comprehensive AED services to ensure your devices are ready when they're needed most.

**LIVE
WEBINAR**

"I USED MY AED, NOW WHAT?????????"

Our free 30-minute live webinar is now scheduled for 9/30/25 @ 10:00am Hawaii time.

These sessions will be scheduled once a month to discuss AED questions, information, and any possible problems.

Each month, we will offer a different topic, followed by an open Q&A session for anything AED related.



Register Here

"I USED MY AED" WEBINAR

TUESDAY, SEPT 30, 2025

10:00-10:30 AM

**ZOOM (LINK TO BE SENT
24-HOURS BEFORE COURSE)**

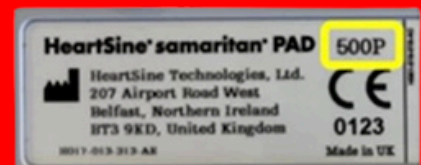
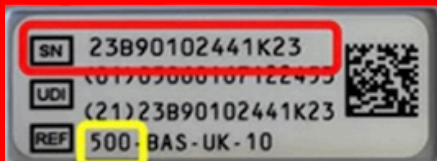


Everyone can attend...

RECALL RECALL RECALL

HEARTSINE 450P

AFFECTED DEVICES INCLUDE A SUBSET OF HEARTSINE SAMARITAN PAD MODELS: 350P, 360P, 450P, AND 500P. A SUBSET OF SERIAL NUMBERS BEGINNING WITH 21, 22, 23, OR 24, AND ARE THEN FOLLOWED BY THE LETTER B, D, E, G, OR H



NOTE: if you have a HeartSine AED
As this device has a RECALL in place,
we don't have an exact ETA for replacement pads.

Special OFFER

\$250 off on select Philips Onsite (HS1)
AEDs while supply lasts

You can earn an additional

\$250 trade-in credit toward the purchase of an OnSite with trade-in of
either a **Cardiac Science G5** or **HeartSine AED**

\$100 credit when trading in a Philips or any other competitive AED



LIMITED
STOCK



NOW GO INSPECT YOUR AEDS

Yes, it's that time again!

Document it!



Presented by AED Institute
info@AED808.com | 808-440-8988
www.AEDInstitute.com

